

GF-TADs

GLOBAL FRAMEWORK FOR THE
PROGRESSIVE CONTROL OF
TRANSBOUNDARY ANIMAL DISEASES



Terms of Reference of the Regional Steering Committee of the GF-TADs for the Americas

April 15, 2015

Foreword

1. General reference for these terms of reference is the Chart on FAO and OIE competencies and complementarities, and its companion *vade mecum* (signed on 6 October 2008).
2. Specific reference for these terms of reference is the Cooperation Agreement of the joint initiative FAO-OIE "Global Framework for the Progressive Control of Transboundary Animal Diseases" (GF-TADs) signed on May 24 2004.
3. These terms of reference concern only common activities to FAO and OIE, which occur in the framework of the GF-TADs initiative and they do not apply to other activities undertaken by these organisations in the framework of their respective mandate.
4. As a general principle, the GF-TADs governance bodies at the global level will not interfere in the existing activities of each organization and will not duplicate work already done by each organization in the framework of its mandate. The governance bodies will respect the roles and existing activities of the OIE and FAO, in particular concerning the collection of official animal disease event Information.
5. The budgetary aspects mentioned in these terms of reference are the main budget GF-TADs in America to basics, and does not concern the budget of the Global Support Units or global programs implemented in the framework of GF TADs.
6. As a general *modus operandi*, any decision must follow the following pathway:

Proposal of the Secretariat of the Steering Committee for the Americas (or proposals from partners to the Secretariat) → Validation (Regional Steering Committee) → Guidance, recommendation (Regional Steering Committee) → Final validation (Regional Steering Committee) when needed/appropriate.

Acronyms

FAO: Food and Agriculture Organization of the United Nations

GLEWS: Global Early Warning System for Major Animal Diseases including Zoonoses

OFFLU: Joint OIE-FAO network of expertise on animal influenza

OIE: World Organisation for Animal Health

WHO: World Health Organization

PAHO / PANAFTOSA: Pan American Health Organization, Regional Office for the Americas

CAN: Andean Community of Nations

SG-CAN: General Secretariat of the Andean Community of Nations

NAAHC: US Committee on Animal Health

CVP: Permanent Veterinary Committee of Mercosur

OIPORC: American Organization of Pig Industry

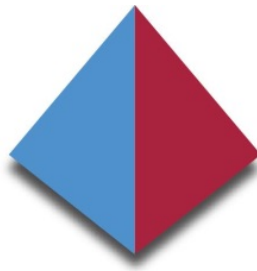
OIRSA: Regional International Organization for Agricultural Health

IDB Inter-American Development Bank

RSUs: Regional Support Units

RSOs: Regional Specialised Organisations

RSC: Regional Steering Committee



GF-TADs

GLOBAL FRAMEWORK FOR THE
PROGRESSIVE CONTROL OF
TRANSBOUNDARY ANIMAL DISEASES



1. SECRETARIAT OF THE REGIONAL STEERING COMMITTEE

1.1. COMPOSITION

The Secretariat of the GF-TADs Steering Committee for the Americas (the Secretariat) is hosted and managed by the OIE Regional Representation for the Americas.

1.2. ROLES

- To set up its Bureau in the OIE Regional Representation for the Americas, based in Buenos Aires, Argentina.
- Be responsible for preparing agendas, invitations, draft recommendations and reports for meetings.
- To undertake and maintain communication with the Global Secretariat and Management Committee of the Global Steering Committee, the RSO, RSUs, the RAHCs (when existing), the FAO Regional and Sub-Regional offices and any relevant stakeholder.

1.3. DUTIES AND RESPONSIBILITIES

- Jointly with FAO organize meetings of the Regional Steering Committee, in particular: to draft and circulate agendas and invitations signed by both parties, starting at least four months before meetings; to organise the logistics; to draft recommendations, action lists and minutes/proceedings of the meetings.
- To ensure the proper composition of the Regional Steering Committee as per point 2.1 of these Terms of references.
- To attend meetings of the RSUs and RSOs, contribute to follow-up of sessions as required and when appropriate, to report summarised outcomes to the Regional Steering Committee.
- In jointly by FAO and OIE provide political and strategic advice to senior RSUs and RSOs by experts and influential groups between meetings and other Regional Steering Committee.
- Participate in the preparation of regional strategies for prevention and control of transboundary animal diseases in liason with the Global Secretariat.
- To promote/facilitate the implementation of the activities of regional scope as per the 5-year Action Plan, (and research activities, pilot studies, conferences), including the activities at the

national level for the benefit of countries particularly through the regional structures, such as the RSUs, the RAHCs (when existing), and as appropriate the FAO Regional and Sub-Regional offices.

- To ensure the regional coordination of the GF-TADs and liaise with all the governance bodies whenever necessary.
- To cooperate and coordinate with relevant OIE and FAO Reference Centres as well as other international research and diagnostic establishments.
- To facilitate the coordination with actors involved in the prevention, detection and control of animal diseases (portfolio and information sharing) in the areas of coordination selected under the five-year plan.
- To draft, circulate for approval, and subsequently publish and distribute the full report of meetings to GF-TADs Steering Committee Members, GF-TADs Global Secretariat, and meeting observers within three months of each meeting.
- Jointly with FAO promote / facilitate monitoring of the activities in the regional action plan.

2. GF-TADs STEERING COMMITTEE FOR THE AMERICAS

2.1. COMPOSITION AND MANAGEMENT

The GF-TADs Steering Committee for the Americas is composed by the following members:

- The 4 Members of the Bureau of OIE Regional Commission for Americas;
- 1 Representative of OIE Headquarters (OIE Paris) and 1 Representative of FAO Headquarters (FAO Rome);
- The OIE Regional Representative for the Americas and the Sub Regional Representative of the OIE for Central America and 1 representative of each of the FAO Regional and Subregional Offices for the Americas;
- 1 Representative of WHO;
- Representatives of Specific Funding Partners;
- Representatives of regional organizations (PAHO-PANAFTOSA, IICA, OIRSA, CAN, CVP, FARM, OIPORC, NAAHC).

The Chairperson will be nominated from SC membership (excluding OIE and FAO permanent staff). The appointment of the Chairperson shall be for a period of not more than 3 years. The Chairperson can be reappointed for a second 3 year period.

The two Vice-Presidents shall be appointed from among the members of the Steering Committee by a consensus of the same, considering the importance of respecting the parity between agencies (OIE and FAO).

In the event of a change in some of the selected representatives of RSC members, will proceed to the appointment of new members at the next meeting of the Committee.

The Chairperson may invite other participants on specific items of the agenda, including representatives of the private sector, in consultation with FAO and OIE. Invited experts shall not have the right to vote.

These Terms of Reference will be reviewed by FAO and OIE by the end of the third year of their adoption.

2.2. ROLES

- To promote the control and eradication of specific TADs in the region and to provide strategic direction to the activities of the Secretariat, the RSOs and the Regional Support Units (RSUs).

- To foster a spirit of cooperation between member countries, donors, RSU and RSOs, to give direction to the Secretariat and to provide advice whenever possible.
- To ensure guidance and coherence, to monitor progress and determine, with the Secretariat, performance indicators for effective field, laboratory, epidemiological evaluation of disease events and control efforts.
- Establish a mechanism for coordination with the Global Steering Committee.

2.3. DUTIES AND RESPONSIBILITIES

- To develop and validate a regional 5-year Action Plan coherent with the GF-TADs Global Action Plan, and with the priorities of the region.
- To advise on the RSOs and RSUs annual work plans.
- Ensure that the representatives of the RSOs receive and issue reports, and coordinate the implementation of the actions agreed in their respective member countries.
- For the Chairperson of the Regional Steering Committee, to attend the GF-TADs Annual Global Steering committee meetings.
- To assist, when applicable, the RSOs and major funding partners in monitoring and evaluating the RSUs activities.

2.4. RULES OF MEETINGS

- The Regional Steering Committee will have a quorum of half of the members + one, provided that at least one either of OIE or FAO Headquarters' representative be present.
- Decision making will be carried out by consensus;
- The Regional Steering Committee will report to the Global Steering Committee;
- Meeting costs and expenses associated to the participation of representatives from developing countries will be covered by the OIE and FAO on an ad hoc 50/50 basis (if available).
- participation of representatives from developing countries will be covered by the OIE and FAO on an ad hoc 50/50 basis (if available).
- An Americas SC member, that is absent two times, will be replaced by appropriate other member.

2.5. GLOBAL GOVERNMENT RELATIONS (STEERING COMMITTEE OF GF-TADS GLOBAL)

The Steering Committee of the GF-TADs for the Americas reports to the GF TADs Global Steering Committee. It addresses the animal health matters of the region ensuring Good Governance of Animal Health Systems (in line with the OIE / FAO Paper: '*Ensuring good governance to address emerging and re-emerging animal disease threats: supporting the veterinary services of developing countries to meet OIE international standards on quality*'). Define and implement policies and strategies of coordination among its members, that are appropriate to prevent, detect and control the priority transboundary animal diseases and zoonoses, inter alia, compliance with OIE standards regarding the Veterinary Services, central issues guidelines on transboundary animal diseases and application of rules and regulations.

See chart of the final page.

2.6. FREQUENCY AND VENUE OF MEETINGS

The Regional Steering Committee will meet every year or two years, as appropriate.

All meetings, including extraordinary meetings will be convened by the Chairperson (with agreement of FAO and OIE).

3. REGIONAL SPECIALISED ORGANISATIONS (RSOs)

3.1. DESIGNATION

RSOs are legally established bodies which are key actors in the implementation of GF-TADs and which, in interaction with OIE, FAO, OIE Regional Commission for the Americas, national veterinary services and technical specialists, strategize and prioritise activities for disease control, information reporting, surveillance, and risk mitigation.

3.2. EXISTING REGIONAL SPECIALISED ORGANISATIONS (RSOs)

The RSO of the Region are currently:

OIRSA, PAHO-PANAFTOSA, SG-CAN, CVP, OIPORC, FARM, NAAHC, BID.

4. REGIONAL SUPPORT UNITS (RSUs) AND OTHER TECHNICAL SUPPORT INSTITUTIONS/NETWORKS

The RSU are defined in the GF-TADs Cooperation Agreement.

OIE or FAO Reference Centres

5. SPECIFIC FUNDING PARTNERS (DONORS)

The Donor members may hold Donor Consultative Meetings during meetings of the Regional Steering Committee chaired by FAO and OIE.

For the Donor Consultative Meetings, secretariat services will be provided by the Permanent Secretariat of the Regional Steering Committee.

Funding partners will designate not more than three representatives to become members of the Steering Committee.

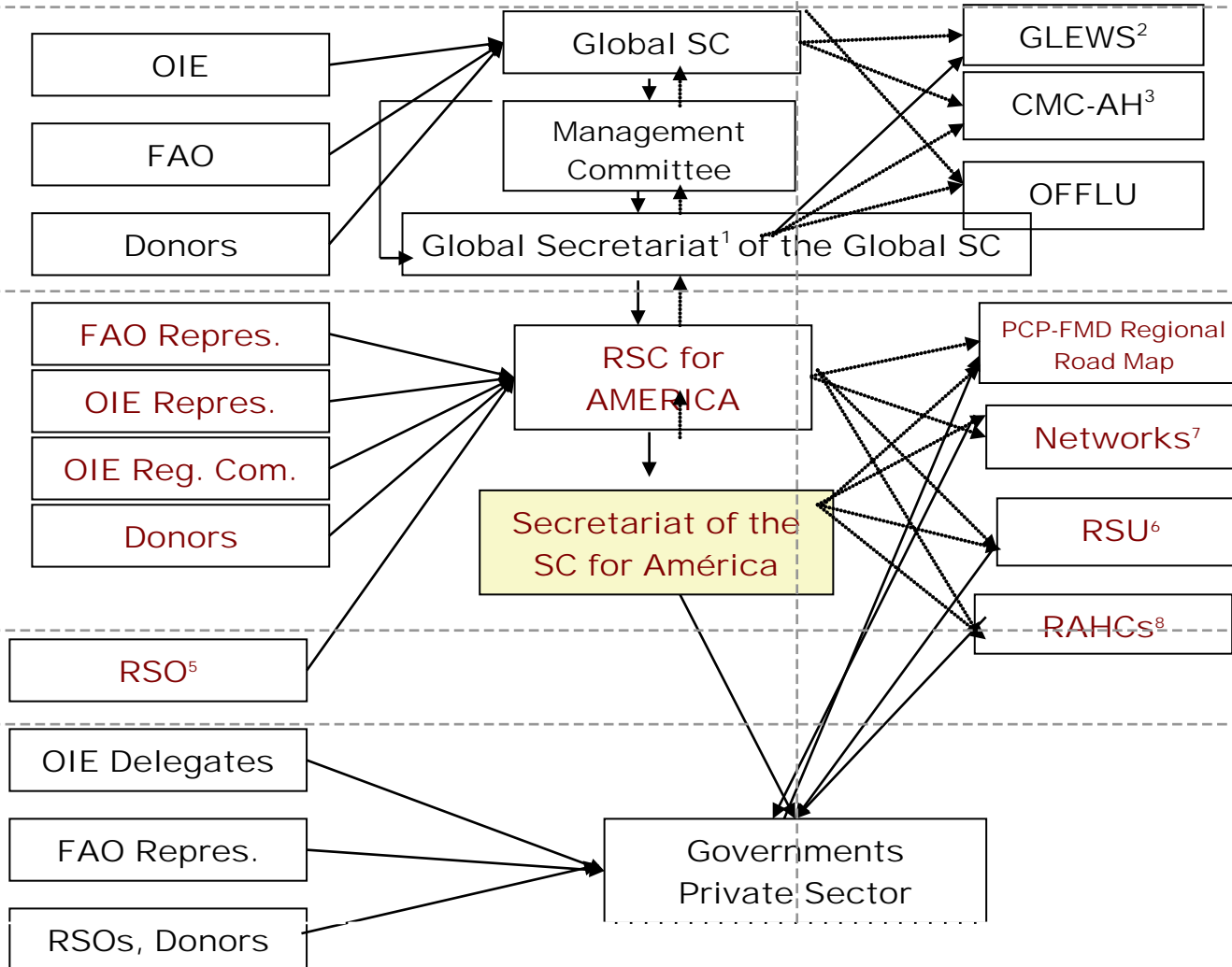
6. PARTICIPATION OF PRIVATE SECTOR

Relevant regional bodies will promote the engagement of private industry, livestock producer associations, cooperatives, private veterinarians and civil society at large and this engagement will be envisioned at each opportunity and will be considered as part of the overall GF-TADs strategy.

GF-TADs Governance

Policy – Guidance

Implementation



- Notes:**
- 1: Secretariat: hosted by FAO HQ
 - 2: GLEWS: core team hosted by FAO HQ
 - 3: CMC-AH: hosted by FAO HQ
 - 4: Regional Secretariats: hosted by OIE regional representations
 - 5: OIRSA, IICA, PAHO-PANAFTOSA, CVP, SG-CAN, NAAHC, FARM
 - 6: OIE Collaborating Centres; OIE and Americas Reference Laboratories; FAO Reference Centres
 - 7: Networks (laboratories, epidemiology teams...).
 - 8: Currently there are not RAHC designated in the region